



## Hollow Form Steampunk Necklace

Our new Hollow Form Cotton Spheres inspired this funky necklace.

### Supplies

#### The Basics

Teflon sheet  
Clay Roller/Slats  
Badger Balm  
Water and Brush  
Scalpel

#### Clay

Any PMC Silver  
(Our necklace weighs 40g.)  
PMC3Paste  
PMC+ Sheet

#### Other Tools & Components

Pro Needle Tool (PRO-X)  
3 Large "Hollow Form Cotton Spheres" (HFBLRG)  
Pattern Cutter Set Round (PCSR)  
Pattern Cutter Set Assorted (PCS5)  
Pattern Cutter Set Square (PCSSQ)  
Clay Mold "Round Creative Components" (Mold 53169)

#### Finishing

Wire or Brass Brush  
Tumbler/Shot  
Shine Brite Polishing Compound (SHNBRT)  
2" x2" Ultra Polishing Pad (ULTPOLPAD)  
Agate Burnisher (BTS or BTF)  
Micro-Mesh Polishing pads (3MSTP364)

### Step-by-Step

1) Knead and compress your clay to condition it. Lightly coat your hands and work surfaces with Badger Balm before beginning.

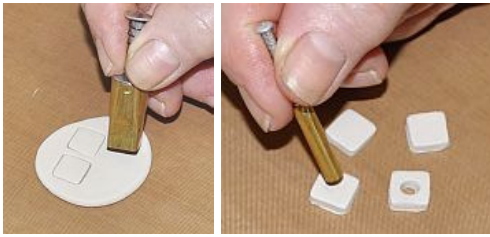


2) Using your Pro Needle Tool push the hole in the cotton sphere all the way through (spheres come half drilled).

3) Insert a toothpick into the sphere and position it so that ends stick out on both sides. The toothpick is used to hold the piece while working and to support it while drying.



4) Paint each sphere with paste. Give each sphere six good thick coats, letting dry well between each coat.



5) While spheres are drying, you can make the small square beads. Using two slats (six playing cards) to control thickness, roll out a piece of conditioned PMC into a circle approximately 1 ½" by 1 ½". Using the second smallest square in the Square Cutter set (PCSSQ) cut out 4 square beads. Cut a hole in the center of each with the small round cutter from the assorted set (PCS5). Let these dry.

6) When you have finished creating the silver shell on each large bead and the PMC3 Paste is thoroughly dry, make sure the toothpick moves and the edges of the holes around the toothpick are smooth.

7) Decorate the first ball with cut outs made from PMC+ Sheet. Cut various size circles with the Circle Pattern Cutters (PCSC) and position them on the sphere using PMC3 Paste as your glue. Make sure all the edges are attached tightly.



8) For the second ball, use the Round Creative Components Mold. Make small half circles in various sizes. Let them set up a little and use your Pro-X tool to remove them from the mold. Attach to the sphere with the PMC3 Paste. Note: These pieces are very

tiny and fragile when you remove them from the mold and it is much easier not to have to refine them in any way. I make very tiny little balls of clay and press them into each space, smoothing the back of each with my finger. I try to remove all excess clay while they are still in the mold. After making sure all the seams are filled in, clean up with a damp brush.



9) To decorate the third bead, roll a small piece of PMC to a depth of one slat (three cards). Cut various size circles with the Pattern Cutter Circle Set (PCSR). Use the small circle from the PCS5 set to cut smaller holes in the middle of some of them. These smaller cut outs can be flattened and attached to the sphere, as well. Attach them to the sphere with PMC3 Paste. Let dry.

10) Make sure the edges of the circles are filled in with paste to ensure they will stay tight during firing.

11) Let all the pieces dry thoroughly. Clean and refine the surfaces and then fire. Make little nests out of fire blanket to support the round structure during firing or set them in an open container of carbon. Use the firing directions provided by the manufacturer for the clay you are using. Our necklace was fired to 1325 degrees for 1 hour. The extended time and increased temperature are used to ensure that all the cotton fired out of the beads.

12) When the beads are finished, quench in cold water, brush with a wire brush, and tumble to polish. Burnish with an agate burnisher and polish with a Micro Mesh Polishing Pad. A metal burnisher will be helpful to burnish the tiny spaces around the circles. Finish with a 2" x2" Ultra Polishing Pad for high shine.

13) String on a cord of your choice. We used narrow soft suede and tied a knot between each bead and at each end of the group.