



Empty Nest Pendant

Simple design elements create depth in this design. Make it large for a pendant or small for beautiful earrings.



Side view

Supplies

The Basics

Teflon sheet
Clay Roller/Slats
Badger Balm
Water and Brush
Scalpel

Clay

PMC+ (Our necklace weighs 30grams, including enamel)

PMC3 Paste

Other Tools & Components

Tissue Slicing Blade (SB)
2" round cutter
Cake decorating plastic molds
Pattern Cutter Set – Round (PCSR)

Finishing

Wire or Brass Brush
Tumbler/Shot
Shine Brite Polishing Compound (SHNBRT)
Agate Burnisher (BTSONE2)
Craft Kit (3KCraft)
2" x2" Ultra Polishing Pad (ULTPOLPAD)

Enamel color of your choice.
We used 2660 Nitric, from our Metal Clay Enameling Kit. (MCE-KIT)

Step-by-Step

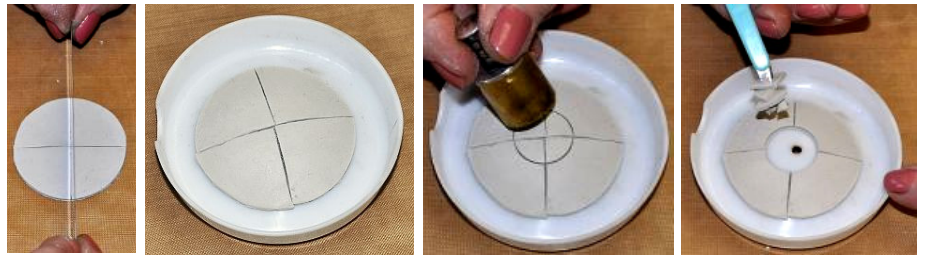
Note: When we refer to “concave” and “convex” in these instructions, we are viewing the piece on the work surface from above. The “concave” circle is hollowed like a bowl, meaning the edges are higher than the center. “Convex” refers to the opposite, with the center being higher than the edges.

- 1) Lightly coat surface of roller, hands, and Teflon sheet with Badger Balm.
- 2) Condition each piece of clay before using, by gently kneading and compressing into a smooth ball.
- 3) Flatten a ball of clay to the general shape of a circle and roll out until the clay is one spacer thick (three cards).



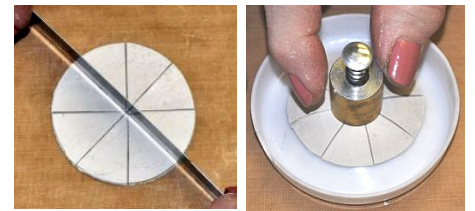
4) Cut out one 2" circle and place it on the concave side of one of your molds. We used cake decorating forms used for creating crafting flowers for our molds. Any convenient, non-stick surface will work.

5) Cut out one more 2" circle. Use the Tissue Slicing Blade to cut that circle in quarters and place it on another plastic mold on the convex side. Carefully center the largest cutter from the Patter cutter Set (PCSR) and cut out a center circle. Use your scalpel to carefully remove the center.



6) Leave all these pieces to dry.

7) When the pieces are dry, cut out one more two inch circle. Cut this circle into quarters and then eighths. Carefully place the cut circle on one of the plastic molds (convex side) and cut a hole in the center with the largest cutter of the set. Let dry.



8) Roll out another piece of clay and cut a circle the size of the largest circle in the PCSR set. Carefully center the smaller cutter of that set and cut out the center. Place a small straw or another prop at one point to lift one small section. This becomes the bail.

9) Dry all pieces to bone dry.

10) I sanded and smoothed all surfaces as much as possible before putting them together. Using the finest sanders in the Craft Kit (3KCraft), you can achieve an extremely refined surface. This is important because once the piece is assembled; many surfaces will be difficult or impossible to reach. Note that your clay may have a bit of a burnished look even before it is fired.



11) To assemble, use the concave circle you created in Step 4 as your base. Beginning with the quarter wedges, brush on a small amount of water where each piece will make a joint during the construction process. Brush some PMC3 Paste on the convex quarter wedges, and lay on the concave base. After each joint is made carefully clean up any extra paste with as little water as possible as it is necessary to keep the finish as smooth as possible. Let dry.

You can see this first layer in the side view:



12) Next, using water and PMC3 Paste, attach four of the convex eighth-wedge pieces to the piece. The centers of the eighth-wedges should be over the seams between the quarter wedges. Repeat with the “eighth size” pieces, centering them over the joints on the sections below them.

You can see this second layer in the side view:



Note that once constructed, the base is concave and the fourth and eighth wedges assembled on top of it are convex. This gives the piece its depth. Let dry thoroughly before you apply the bail to the back! Note: You will have four of the eighth-wedge pieces left over. Store for future use or use them in another pendant.

13) Carefully turn the piece over. Apply a thin coat of water to the back of the piece where the bail will attach as well as to the back of the bail. Brush PMC3 Past on the back of the bail and apply to the center of the back. Let dry.



14) Let completely dry and make any final refinements to the finish.

15) Fire according to manufacturer’s directions for the clay you are using. I placed the circle on a small piece of fire blanket to support the shape and tucked tiny pieces into each open space on the edges to give the architecture more support during firing.

16) After firing, tumble and burnish.

17) Important: Before enameling - read the instructions that come with the kit. I used the packing method, mixing the enamel with a little water and Klyr-fire and then packing it into the space with a brush. Let dry completely.

18) I fired this piece to 1425degrees Fahrenheit and let it cool in the kiln.

19) The enamel firing leaves the silver surface a matte finish and smoothes any tiny imperfections. I loved this look and decided not to tumble and burnish it. I did use a 2x2 Ultra Polish Pad to highlight the edges and some higher spots on the surface.